

The FastMount™



Introducing the only ASME Code certified mounting flange with a low profile split ring retainer system.

The Problem

Traditional “Connect” style process connections are perfect for reducing deadleg; however a vast majority of these connections are “Bolted,” causing galling issues, stripped threads, and lost parts.

The Solution

Comprised of (2) split rings and a clamp, the FastMount eliminates virtually every common issue with the “Connect” style process connection. The advantage of using the FastMount is that it reduces your operator’s installation time. The FastMount is 3 to 5 times faster to install your process connections and instruments than traditional “Connects.”



Advantages

- The FastMount sanitary mounting flange allows you to change out instruments, probes, piping, etc. quickly through the use of a clamp-type design and revolutionary FastMount (Low Profile) Split-Ring Retainer.
- The proprietary FastMount (Low Profile) Split-Ring Retainer is thin and strong allowing close coupled connections for all your probing or sampling needs.
- The FastMount is 100% compatible with the NovAseptic NovaSeptum® Sampling System.
- The FastMount is stocked in a standard 1 $\frac{3}{8}$ ” thickness, but can be special ordered to any thickness or angle.
- The FastMount can be CNC “coped” to any radius your installation requires based upon your tank shell requirements.



Holloway America
720 N. Cedarbrook Ave.
Springfield, MO 65802

Phone: 417.863.0077
Toll Free: 866.659.0077
Fax: 417.863.8851

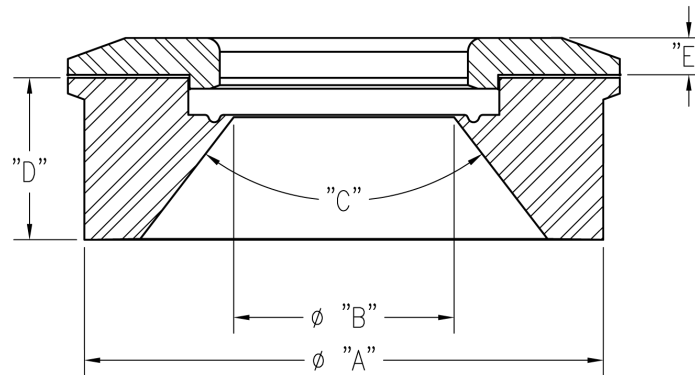
www.HollowayAmerica.com
info@HollowayAmerica.com
Datasheet: FastMount_250121

The FastMount™



FastMount Specifications

Material Types	316L (Stocked), 304L, AL6XN, C-22
Surface Finishes	35 Ra I.D. / 35 Ra O.D. Finishes to 10 Ra (Electropolished) are available
Sizes	1/2"- 6" (Stocked in 1/2"- 4")
Thickness	1 3/8" (additional heights and angles are available)
Connection Type	Welded Mounting Flange with Low Profile Split Rings
Design Pressure	-15 psig to 100 psig.
Design Temperature	-20° to 400° F



FastMount Dimensions & Information

DESCRIPTION	"A" DIMENSION	"B" DIMENSION	"C" DIMENSION	"D" DIMENSION	"E" DIMENSION	CLAMP SIZE
FASTMOUNT ASSEMBLY: 1/2" SIZE	2.192"	0.370"	60°	1.375"	0.313"	2"
FASTMOUNT ASSEMBLY: 3/4" SIZE	2.192"	0.620"	60°	1.375"	0.313"	2"
FASTMOUNT ASSEMBLY: 1" SIZE	3.300"	0.870"	70°	1.375"	0.313"	3"
FASTMOUNT ASSEMBLY: 1 1/2" SIZE	3.300"	1.370"	70°	1.375"	0.313"	3"
FASTMOUNT ASSEMBLY: 2" SIZE	4.230"	1.870"	75°	1.375"	0.313"	4"
FASTMOUNT ASSEMBLY: 2 1/2" SIZE	5.161"	2.370"	60°	1.625"	0.313"	5"
FASTMOUNT ASSEMBLY: 3" SIZE	5.161"	2.870"	60°	1.625"	0.313"	5"
FASTMOUNT ASSEMBLY: 4" SIZE	6.000"	3.832"	60°	1.625"	0.418"	6"
FASTMOUNT ASSEMBLY: 6" SIZE	8.000"	5.782"	60°	1.750"	0.500"	8"

* Each FastMount Assembly is supplied with a mounting flange, retainers, and 13MHHM clamp.



Holloway America
720 N. Cedarbrook Ave.
Springfield, MO 65802

Phone: 417.863.0077
Toll Free: 866.659.0077
Fax: 417.863.8851

www.HollowayAmerica.com
info@HollowayAmerica.com
Datasheet: FastMount_250203

The FastMount™

FastMount Part Numbers & Supply

DESCRIPTION	ASSEMBLY PART NUMBER	AVERAGE LEAD-TIME
FASTMOUNT ASSEMBLY: 1/2" SIZE	FMA2.5X1.375	IN STOCK
FASTMOUNT ASSEMBLY: 3/4" SIZE	FMA2.75X1.375	IN STOCK
FASTMOUNT ASSEMBLY: 1" SIZE	FMA21X1.375	IN STOCK
FASTMOUNT ASSEMBLY: 1 1/2" SIZE	FMA21.5X1.375	IN STOCK
FASTMOUNT ASSEMBLY: 2" SIZE	FMA22X1.375	IN STOCK
FASTMOUNT ASSEMBLY: 2 1/2" SIZE	FMA22.5X1.625	3-4 WEEKS
FASTMOUNT ASSEMBLY: 3" SIZE	FMA23X1.625	IN STOCK
FASTMOUNT ASSEMBLY: 4" SIZE	FMA24X1.625	IN STOCK
FASTMOUNT ASSEMBLY: 6" SIZE	FMA26X1.750	3-4 WEEKS

* For pricing on units, contact your Holloway America Sales Engineer.



Check out our YouTube Channel for a comparison between the FastMount and the NA Connect.

<http://www.youtube.com/watch?v=8UIXqH9AANU>



*U.S. Patent No. RE49,141



Holloway America
720 N. Cedarbrook Ave.
Springfield, MO 65802

Phone: 417.863.0077
Toll Free: 866.659.0077
Fax: 417.863.8851

www.HollowayAmerica.com
info@HollowayAmerica.com
Datasheet: FastMount_250203